

DUGGAN



DUGGAN STEEL (IRL) Ltd. STEEL STOCKHOLDERS

Steel Stockholders

OUR COMPLETE PRODUCT RANGE

www.steel.ie



Table of Contents



<i>Statement of CE Conformity</i>	4
<i>Universal Columns</i>	5
<i>Universal Beams</i>	6-7
<i>IPE's</i>	8
<i>H.E.B.</i>	8
<i>Flat Bar</i>	9
<i>Channels</i>	10
<i>Angles</i>	11
<i>Square Hollow Sections</i>	12
<i>Circular Hollow Sections</i>	13
<i>Rectangular Hollow Sections</i>	13
<i>Galvanised Tube</i>	14
<i>Mild Steel Square and Rounds</i>	14
<i>Chequer Plate</i>	15
<i>Aluminium Chequer Plate</i>	15
<i>Plate</i>	15
<i>Mesh and Rebar</i>	16
<i>Flow Forge</i>	16
<i>Shotblasting and Priming</i>	17
<i>Approximate Conversions</i>	18

Figures and comments given in this brochure are given for guidance purposes only. While care has been taken to ensure accuracy Duggan Steel Ireland Ltd. and its related companies do not accept liability for errors / or omissions. Customers should satisfy themselves of the suitability of the products supplied or manufactured by Duggan Steel Ireland Ltd. for the use intended.

Statement of CE Conformity

Duggan Steel Ireland Ltd purchases, supplies and distributes products which are compliant with

REGULATION (EU) No 305/2011 OF THE EUROPEAN PARLIAMENT AND OF THE COUNCIL of 9 March 2011 laying down harmonised conditions for the marketing of construction products and repealing Council Directive 89/106/EEC

This regulation governs the CE marking of product governed by EU Harmonised Standards. The products supplied by Duggan Steel Ireland comply with the following standards.

Standard	Product	Notes
EN10025	OPEN SECTIONS(Rolled Sections, Plates and Bar Material)	See Table A
EN 10219 & EN10210	CLOSED Sections(Structural Hollow Sections)	See Table B

TABLE A: OPEN SECTIONS(Rolled Sections, Plates and Bar Material)			
Product	Standard	Tolerances on Shape and Dimensions	Note
Universal Beams & Columns	EN10025-2	EN 10034	1
IPE'S	EN10025-2	EN 10034	1
Channels	EN10025-2	EN10279; EN 10034	1
Angles	EN10025-2	EN 10056-2	1
Plates (Reversing Mill)	EN10025-2	EN 10029	2
DE coiled Plates	EN10025-2	EN 10051; EN 10111	3

Notes:

1. Steel Grades S275 and S355 in qualities JR, JO
2. The scope of EN10029 covers plates of 3mm up to 250mm rolled in a reversing mill process, whereas EN10051 covers plates up to 25mm de-coiled from continuously hot-rolled uncoated flat products.
3. Grade DD11 – S235

TABLE B: CLOSED SECTIONS (Structural Hollow Sections)		
Product	Standard	Tolerances, Dimensions & Sectional Properties
Hollow Sections (Cold Formed)	EN10219-1	EN10219-2
Hollow Sections (Hot Finished)	EN10210-1	EN10210-2

Duggan Steel Ireland Ltd operates a system of receipt, despatch and delivery which ensures traceability from manufacturer to point of delivery of the steel products to the purchaser.



John Moore - Managing Director

Universal Columns

AVAILABLE STOCK LENGTHS												
152x152x23Kg/m	8m	9.2m	10m	11m	12.2m	13m	14m	15.3m	15.5m			
152x152x30Kg/m	8m	9.2m	10m	11m	12.2m	13m	14m	15.3m		16.5m		
152x152x37Kg/m		9.5m		11m	12.2m	13m	14m	15.3m	15.5m	16.5m		
203x203x46Kg/m		9.2m	10m	11m	12.2m	13m	14m	15.3m	16m	16.5m	17m	18.3m
203x203x52Kg/m			10m	11m	12.2m	13m	14m	15.3m	16m			18.3m
203x203x60Kg/m			10m	11m	12.2m	13m	14m	15.3m	15.5m	16m		18.3m
203x203x71Kg/m				11m	12.2m	13m	14m	15.3m	16m			18.3m
203x203x86Kg/m			10m		12.2m		14m	15.3m				18.3m
254x254x73Kg/m			10m	11m	12.2m	13m	14m	15.3m	16m	16.5m	17m	18.3m
254x254x89Kg/m			10m	11m	12.2m	13m	14m	15.3m	16m	16.5m	17m	18.3m
254x254x107Kg/m		9.5m	10m	11m	12.2m	13m	14m	15.3m	15.5m	16.5m	17m	18.3m
254x254x132Kg/m			10m		12.5m	13m	14m	15.3m	15.5m			18.5m
254x254x167Kg/m					12.5m				15.5m	16.5m		
305x305x97Kg/m		9.5m	10m	11m	12.2m	13m	14m	15.3m	16m	16.5m	17m	18.5m
305x305x118Kg/m			10m	11m	12.2m	13m	14m	15.3m	16m	16.5m		18.5m
305x305x137kg/m		9.5m		11m	12.5m	13m	14m		15.5m	16.5m		18.3m
305x305x158Kg/m		9.5m	10m	11m	12.5m		14m		15.5m	16.5m	17.5m	18.7m
305x305x198Kg/m					12.2m	12.5m			15.5m	16.5m		18.3m
305x305x240Kg/m			10m	11.5m	12.2m	12.5m			15.5m		17m	18.5m
305x305x283Kg/m									15.5m			
356x368x129Kg/m		9.5m			12.2m				15.5m			
356x368x153Kg/m					12.2m		14m		15.5m			
356x368x177Kg/m					12.2m				15.5m	16.5m		18.5m
356x368x202Kg/m		9.5m			12.5m							
356x406x235Kg/m									15.5m	16.5m		18.5m
356x406x340Kg/m					12.2m	13m						

Standard Grade is S355JO. Please Check with the Sales Office on 056 7725050 for more information

www.steel.ie

Scan with your
smartphone to visit
our website



Universal Beams

AVAILABLE STOCK LENGTHS												
127x76x13Kg/m					12.2m			14m				
152x89x16Kg/m					12.2m			14m	15.5m			
178x102x19Kg/m	6.1m		10.1m	11m	12.2m		13m	14m	15.3m			
203x102x23Kg/m	6.1m	9.5m		11m	12.2m		13m	14m	15.3m			
203x133x25Kg/m	8.1m	9.2m	10.1m	11m	12.2m		13m	14m	15.3m	16.5m		
203x133x30Kg/m	8m	9.2m	10.1m	11m	12.2m		13m	14m	15.3m	16.5m		18.3m
254x102x22Kg/m					12.2m			14m	15.5m			
254x102x25Kg/m					12.2m			14m	15.5m	16.5m		
254x102x28Kg/m					12.2m			14m	15.5m	16.5m		
254x146x31Kg/m		9.2m	10.1m	11m	12.2m	12.5m	13m	14m	15.3m	16.5m	17m	18.3m
254x146x37Kg/m		9.5m	10m	11m	12.2m			14m	15.3m	16m	17m	18.3m
254x146x43Kg/m	8m	9.5m	10.1m		12.2m		13m	14m	15.3m	16.5m		18.3m
305x102x25Kg/m				11m	12.2m			14m	15.5m	16.5m		
305x102x28Kg/m					12.2m			14m	15.5m			
305x102x33Kg/m					12.2m			14m	15.5m			
305x127x37Kg/m					12.2m			14m	15.5m	16.5m		
305x127x42Kg/m					12.2m			14m	15.5m			
305x127x48Kg/m					12.2m				15.5m			
305x165x40Kg/m		9.2m	10m	11m	12.2m		13m	14m	15.3m	16m	17m	18.3m
305x165x46Kg/m		9.2m	10m	11m	12.2m		13m	14m	15.5m	16.5m		18.3m
305x165x54Kg/m			10.1m		12.2m		13m	14m	15.5m	16.5m		18.3m
356x127x33Kg/m					12.2m			14m	15.3m			
356x127x39Kg/m					12.2m			14m	15.3m	16.5m		
356x171x45Kg/m			10m	11m	12.2m		13m	14m	15.3m	16m	17m	18.3m
356x171x51Kg/m			10m	11m	12.2m		13m	14m	15.3m	16.5m		18.3m
356x171x57Kg/m			10m		12.2m		13m	14m	15.3m	16.5m		18.5m
356x171x67Kg/m			10m		12.2m			14m	15.5m	16.5m		18.5m
406x140x39Kg/m		9.5m			12.2m		13m	14m	15.3m	16.5m		
406x140x46Kg/m					12.2m		13m	14m	15.5m	16.5m		
406x178x54Kg/m		9.5m	10m	11m	12.2m		13m	14m	15.3m	16.5m	17m	18.3m
406x178x60Kg/m			10m	11m	12.2m		13m	14m	15.3m	16.5m		18.3m
406x178x67Kg/m			10m		12.2m		13m	14m	15.5m	16.5m		18.3m
406x178x74Kg/m			10m		12.2m			14m	15.5m	16.5m		18.3m
457x152x52Kg/m					12.5m				15.5m			
457x152x60Kg/m		9.5m				12.5m		14m	15.5m			
457x152x67Kg/m						12.5m			15.5m			
457x152x74Kg/m					12.2m	12.5m			15.5m			
457x191x67Kg/m			10m	11m	12.2m		13m	14m	15.3m	16m	17m	18.3m
457x191x74Kg/m			10m		12.2m	12.5m	13m	14m	15.3m	16.5m	17m	18.3m
457x191x82Kg/m			10m			12.5m		14m	15.5m	16.5m		18.5m
457x191x89Kg/m			10m	11m	12.2m		13m	14m	15.5m	16.5m	17m	18.3m

Universal Beams

AVAILABLE STOCK LENGTHS												
457x191x98Kg/m			10m			12.5m		14m	15.3m	16.5m		18.5m
533x210x82Kg/m			10.1m	11m	12.2m		13m	14m	15.5m	16.5m	17m	18.5m
533x210x92Kg/m			10m	11m	12.2m	12.5m	13m	14m	15.5m	16.5m	17m	18.5m
533x210x101Kg/m					12.2m			14m	15.5m	16.5m	17.5m	18.3m
533x210x109Kg/m				11m	12.2m			14m	15.5m	17m	17.5m	18.5m
533x210x122Kg/m			10m	11m		12.5m		14m	15.5m	16.5m		18.5m
610x229x101Kg/m			10m	11m	12.2m		13m	14m	15.5m	16.5m	17m	18.5m
610x229x113Kg/m			10m			12.5m		14m	15.5m	16.5m	17m	18.5m
610x229x125Kg/m			10m	11m		12.5m	13m	14m	15.5m	16.5m		18.5m
610x229x140Kg/m			10m	11m	12.1m	12.5m		14m	15.5m	16.5m		18.5m
610x305x149Kg/m			10m		12.2m			14m	15.5m	16.5m		18.5m
610x305x179Kg/m			10m	11m		12.5m		14m		16.5m		18.5m
610x305x238Kg/m									15.5m	16.5m		18.5m
686x254x125Kg/m				11m				14m	15.5m	16.5m		
686x254x140Kg/m						12.5m						18.5m
686x254x152Kg/m									15.5m	16m	17m	18.3m
762x267x134Kg/m												
762x267x147Kg/m			10m			12.5m	13m	14m	15.5m	16.5m		18.5m
762x267x173Kg/m								14m	15.5m	16.5m	18.3m	18.5m
838x292x176Kg/m			10m	11m					15.5m			18.5m
838x292x194Kg/m									15.5m			
838x292x226Kg/m						12.5m		14m	15.5m			18.5m

Standard Grade is **S355JO** Please Check with the Sales Office on 056 7725050 for more information



Shot Blasting and Priming service available
Contact our sales team for more information- Call +353 56 7725050 or
email: salesds@steel.ie

I.P.E's & H.E.B's

I.P.E AVAILABLE STOCK LENGTHS

I.P.E. 100					12.2m				
I.P.E. 120					12.2m				
I.P.E. 140					12.2m				
I.P.E. 160	8.1m	9.1m	10.1m	11.1m	12.2m	13.1m	14.1m	15.3m	
I.P.E. 180	8.1m	9.1m	10.1m	11.1m	12.2m	13.1m	14.1m	15.3m	
I.P.E. 200	8.1m	9.2m	10.1m	11.1m	12.2m	13.1m	14.1m	15.3m	16.1m
I.P.E. 220		9.2m	10.1m	11.1m	12.2m	13.1m	14.1m	15.3m	16.1m

All our IPE products are grade **S275JR**

Please check with our sales staff on 056-7725050 for more information

I.P.E SHOTBLASTED AND PRIMED LENGTHS

I.P.E. 200					12.2m		14.1m	15.3m	
------------	--	--	--	--	-------	--	-------	-------	--

Shotblasted and primed IPE 200 are stocked in Grade **S275JR** ready for immediate delivery. **Please Check with the Sales Office on 056 7725050 for more information**

H.E.B

H.E.B 100	12.2m	15.3m
H.E.B 120	12.2m	

HEBs are available in grade S355

Scan with your
smartphone to visit
our website



Contact our sales team today

Tel.: +353-56-7725050

Fax: +353-56-7725055

E-mail: salesds@steel.ie

www.steel.ie



Flat Bar

LENGTHS	
13 x 3mm	4.1m
13 x 5mm	4.1m
16 x 5mm	4.1m
20 x 3mm	4.1m
20 x 3mm EN8	4.1m
20 x 5mm	6.1m
20 x 10mm	6.1m
25 x 3mm	4.1m
25 x 5mm	6.1m
25 x 6mm	6.1m
25 x 8mm	6.1m
25 x 10mm	6.1m
25 x 12mm	6.1m
30 x 3mm	4.1m
30 x 5mm	6.1m
30 x 6mm	6.1m
30 x 8mm	6.1m
30 x 10mm	6.1m
30 x 12mm	6.1m
40 x 3mm	4.1m
40 x 5mm	6.1m
40 x 6mm	6.1m
40 x 8mm	6.1m
40 x 10mm	6.1m
40 x 12mm	6.1m
40 x 15mm	6.1m
40 x 20mm	6.1m
50 x 3mm	6.2m
50 x 5mm	6.1m
50 x 6mm	6.1m
50 x 8mm	6.1m
50 x 10mm	6.1m
50 x 12mm	6.1m
50 x 15mm	6.1m
50 x 20mm	6.1m
50 x 25mm	6.2m
50 x 30mm	6.1m
60 x 5mm	6.3m
60 x 6mm	6.3m
60 x 8mm	6.1m
60 x 10mm	6.3m
60 x 12mm	6.3m
60 x 15mm	6.1m

LENGTHS	
60 x 20mm	6.3m
65 x 6mm	6.1m
65 x 10mm	6.1m
65 x 12mm	6.1m
65 x 15mm	6.1m
70 x 8mm	6.1m
70 x 6mm	6.2m
70 x 8mm	6.1m
70 x 10mm	6.1m
70 x 12mm	6.1m
70 x 15mm	6.1m
75 x 5mm	6.2m
75 x 6mm	6.1m
75 x 8mm	6.2m
75 x 10mm	6.1m
75 x 12mm	6.1m
75 x 15mm	6.1m
75 x 20mm	6.1m
75 x 25mm	6.1m
80 x 5mm	6.2m
80 x 6mm	6.3m
80 x 8mm	6.2m
80 x 10mm	6.3m
80 x 12mm	6.2m
80 x 15mm	6.2m
80 x 20mm	6.2m
80 x 25mm	6.1m
90 x 10mm	6.2m
90 x 12mm	6.2m
90 x 15mm	6.1m
90 x 20mm	6.1m
100 x 5mm	6.1m
100 x 6mm	6.1m
100 x 8mm	6.1m
100 x 10mm	6.1m
100 x 12mm	6.1m
100 x 15mm	6.1m
100 x 20mm	6.1m
100 x 25mm	6.1m
110 x 10mm	6.1m
120 x 6mm	6.1m
120 x 8mm	6.2m
120 x 10mm	6.2m

LENGTHS	
120 x 12mm	6.2m
120 x 15mm	6.2m
120 x 20mm	6.2m
120 x 25mm	6.2m
130 x 6mm	6.1m
130 x 8mm	6.1m
130 x 10mm	6.1m
130 x 12mm	6.1m
130 x 15mm	6.2m
130 x 20mm	6.2m
140 x 10mm	6.1m
140 x 12mm	6.2m
150 x 6mm	6.1m
150 x 8mm	6.1m
150 x 10mm	6.1m
150 x 12mm	6.1m
150 x 15mm	6.1m
150 x 20mm	6.1m
150 x 25mm	6.1m
160 x 8mm	6.1m
160 x 10mm	6.1m
160 x 12mm	6.2m
160 x 15mm	6.2m
160 x 20mm	6.2m
180 x 6mm	6.2m
180 x 8mm	6.2m
180 x 10mm	6.1m
180 x 12mm	6.1m
180 x 15mm	6.1m
180 x 20mm	6.1m
180 x 25mm	6.1m
200 x 6mm	6.2m
200 x 8mm	6.1m
200 x 10mm	6.1m
200 x 12mm	6.1m
200 x 15mm	6.1m
200 x 20mm	6.1m
200 x 25mm	6.1m
200 x 30mm	6.1m
220 x 10mm	6.1m
220 x 12mm	6.1m
220 x 15mm	6.1m
220 x 20mm	6.1m

LENGTHS	
220 x 25mm	6.2m
250 x 6mm	6.2m
250 x 8mm	6.1m
250 x 10mm	6.1m
250 x 12mm	6.1m
250 x 15mm	6.1m
250 x 20mm	6.1m
250 x 25mm	6.1m
275 x 10mm	6.1m
300 x 6mm	6.2m
300 x 8mm	6.2m
300 x 10mm	6.1m
300 x 12mm	6.1m
300 x 15mm	6.1m
300 x 20mm	6.1m
300 x 25mm	6.1m
350 x 10mm	6.2m
350 x 12mm	6.1m
350 x 15mm	6.2m
350 x 15mm	6.2m
350 x 20mm	6.1m
350 x 25mm	6.1m
400 x 10mm	6.1m
400 x 12mm	6.1m
400 x 15mm	6.1m
400 x 20mm	6.1m
400 x 25mm	6.1m
450 x 12mm	6.1m
450 x 15mm	6.1m
450 x 20mm	6.1m
450 x 25mm	6.1m

GALVANISED FLAT BAR	
40 x 5mm	6.1m
40 x 10mm	6.1m
50 x 5mm	6.1m
50 x 10mm	6.1m
100 x 5mm	6.1m
180 x 12mm	6.1m

Standard Grade is **S275JR**. Universal Flats available in **S355JO/JR**

Channels

CHANNEL STOCK LENGTHS							
40 x 20mm	6.1m						
51 x 25mm	6.1m						
60 x 30mm	6.1m						
76 x 38mm	6.1m	7m	10.3m	12.2m			
100 x 50mm	6.1m		10m	12.2m		14m	
125 x 65mm	6.1m		10.3m	12.2m		14m	
150 x 75mm	6.1m	9.5m	11m	12.2m		14m	15.5m
150 x 90mm	6.1m	8m	9.5m	12.2m		14m	15.5m
180 x 75mm	6.1m	9.5m	11m	12.2m		14m	15.5m
180 x 90mm				12.2m		14m	15.3m
200 x 75mm		9.2m		12.2m	13m	14m	15.5m
200 x 90mm				12.2m		14m	15.5m
230 x 75mm				12.2m			
230 x 90mm				12.5m			15.5m
260 x 75mm				12.2m			15.5m
260 x 90mm				12.2m		14m	15.5m
300 x 90mm				12.2m			15.5m
300 x 100mm				12.2m			15.5m
380 x 100mm				12.5m			
430 x 100mm				12.5m			

Channel sizes upto and including 100 x 50mm available in Grade **S275JR**. 125 x 65mm and 150 x 75mm are available in both **S275JR** and **S355JO**. Sizes from 150 x 90mm upwards are Grade **S355JO/JR**. Please check with our sales staff on 056-7725050 for more information

GALVANISED CHANNEL STOCK LENGTHS							
78 x 38mm	6.1m						
100 x 50mm	6.1m						
150 x 75mm	6.1m						



Angles

EQUAL ANGLE STOCK LENGTHS

20 x 20 x 3mm	6.1m	
25 x 25 x 3mm	6.1m	
25 x 25 x 5mm	6.1m	
30 x 30 x 3mm	6.1m	
30 x 30 x 5mm	6.1m	
40 x 40 x 3mm	6.1m	
40 x 40 x 4mm	6.1m	
40 x 40 x 5mm	6.1m	12.2m
40 x 40 x 6mm	6.1m	12.2m
50 x 50 x 3mm	6.1m	
50 x 50 x 5mm	6.1m	12.1m
50 x 50 x 6mm	6.1m	12.2m
50 x 50 x 8mm		12.2m
60 x 60 x 5mm	6.1m	12.2m
60 x 60 x 6mm	6.1m	12.2m
60 x 60 x 8mm		12.2m
60 x 60 x 10mm		12.2m
70 x 70 x 6mm	6.1m	12.2m
70 x 70 x 8mm		12.2m
70 x 70 x 10mm		12.2m
80 x 80 x 6mm	6.1m	12.2m
80 x 80 x 8mm		12.2m
80 x 80 x 10mm		12.2m
90 x 90 x 6mm	6.1m	12.2m
90 x 90 x 8mm		12.2m
90 x 90 x 10mm		12.2m
100 x 100 x 6mm		12.1m
100 x 100 x 8mm		12.2m
100 x 100 x 10mm	6.1m	12.2m
100 x 100 x 12mm	6.1m	12.2m
120 x 120 x 8mm		12.2m
120 x 120 x 10mm		12.2m
120 x 120 x 12mm		12.2m
120 x 120 x 15mm		12.2m
150 x 150 x 10mm		12.2m
150 x 150 x 12mm		12.2m
150 x 150 x 15mm		12.2m
150 x 150 x 18mm		12.2m
200 x 200 x 12mm		12.2m
200 x 200 x 16mm		12.2m

UNEQUAL ANGLE STOCK LENGTHS

40 x 20 x 4mm	6.1m	
50 x 30 x 5mm	6.1m	
60 x 40 x 6mm		12.2m
75 x 50 x 6mm	6.1m	12.2m
100 x 50 x 8mm		12.2m
100 x 65 x 7mm	6.1m	12.2m
100 x 65 x 8mm		12.2m
100 x 65 x 10mm		
100 x 75 x 8mm		12.2m
100 x 75 x 10mm	6.5m	12.2m
100 x 75 x 12mm		12.2m
125 x 75 x 8mm	6.1m	12.2m
125 x 75 x 10mm		12.2m
125 x 75 x 12mm	8m	12.2m
150 x 75 x 10mm		12.2m
150 x 75 x 12mm		12.2m
150 x 90 x 10mm		12.2m
150 x 90 x 12mm		12.2m
200 x 100 x 10mm		12.2m
200 x 100 x 12mm		12.2m
200 x 100 x 15mm		12.2m
200 x 150 x 12mm		12.2m
200 x 150 x 15mm		14m

Standard Grade is **S275JR**. Some sizes are also available in **S355JO/JR**. Please check with the sales team on 056 - 7725050 for more information

GALVANISED ANGLE STOCK LENGTHS

40 x 40 x 5mm	6.1m	
50 x 50 x 5mm	6.1m	
60 x 60 x 6mm	6.1m	

Galvanised Angles Standard Grade is **S275JR**



Contact our sales team today
Tel.: +353-56-7725050

Square Hollow Section

SQUARE HOLLOW SECTION LENGTHS			
20 x 20 x 2mm	7.6m		
25 x 25 x 2mm	7.6m		
25 x 25 x 2.5mm	7.6m		
25 x 25 x 3mm	7.6m		
30 x 30 x 2mm	7.6m		
30 x 30 x 2.5mm	7.6m		
30 x 30 x 3mm	7.6m		
40 x 40 x 2mm	7.6m		
40 x 40 x 2.5mm	7.6m		
40 x 40 x 3mm	7.6m		
40 x 40 x 4mm	7.6m		
40 x 40 x 5mm	7.6m		
50 x 50 x 2mm	7.6m		
50 x 50 x 2.5mm	7.6m		
50 x 50 x 3mm	7.6m		
50 x 50 x 4mm	7.6m		
50 x 50 x 5mm	7.6m		
60 x 60 x 2mm	7.6m		
60 x 60 x 3mm	7.6m		
60 x 60 x 4mm	7.6m		
60 x 60 x 5mm	7.6m		12m
60 x 60 x 6mm	7.6m		
60 x 60 x 8mm	7.6m		
70 x 70 x 3mm	7.6m		
70 x 70 x 4mm	7.6m		
70 x 70 x 5mm	7.6m		
75 x 75 x 5mm	7.6m		
80 x 80 x 3mm	7.6m		
80 x 80 x 3.5mm	7.6m		
80 x 80 x 4mm	7.6m		
80 x 80 x 5mm	7.6m		
80 x 80 x 6mm	7.5m		
80 x 80 x 8mm			12m
90 x 90 x 3mm	7.6m		
90 x 90 x 5mm	7.6m		12m
90 x 90 x 6mm	7.6m		12m
90 x 90 x 8mm	7.6m		12m
100 x 100 x 3mm	7.6m		
100 x 100 x 4mm	7.6m		
100 x 100 x 5mm	7.6m		12m
100 x 100 x 6mm	7.6m	10m	12m
100 x 100 x 8mm	7.6m	10m	12m

SQUARE HOLLOW SECTION LENGTHS			
100 x 100 x 10mm	7.6m	10m	12m
120 x 120 x 5mm	7.6m		
120 x 120 x 6mm	7.6m		12m
120 x 120 x 8mm	7.6m		12m
120 x 120 x 10mm			12m
140 x 140 x 6mm			12m
140 x 140 x 8mm			12m
140 x 140 x 10mm		10m	12m
150 x 150 x 5mm	7.6m		12m
150 x 150 x 6mm	7.6m		12m
150 x 150 x 8mm			12m
150 x 150 x 10mm			12m
150 x 150 x 12mm			12m
180 x 180 x 6mm			12m
180 x 180 x 8mm			12m
200 x 200 x 5mm	7.6m		12m
200 x 200 x 6mm	7.6m		12m
200 x 200 x 8mm			12m
200 x 200 x 10mm			12m
250 x 250 x 8mm			12m
250 x 250 x 10mm			12m

Smaller Hollow sections standard Grade is **S235JR**. Larger Hollow sections standard Grade is **Cold Formed S355J2H**. Some Sections are available in both grades. Check with our sales staff on 056-7725050 for more information



GALVANISED HOLLOW SECTION LENGTHS			
20 x 20 x 2mm	7.6m		
25 x 25 x 2.5mm	7.6m		
30 x 30 x 2.5mm	7.6m		
40 x 40 x 2.5mm	7.6m		
50 x 25 x 2.5mm	7.6m		
50 x 50 x 2.5mm	7.6m		
80 x 40 x 3mm	7.6m		
80 x 80 x 3mm	7.6m		
100 x 100 x 4mm	7.6m		

Galvanised Hollow sections standard grade is **S235JR**

Rectangular Hollow Section

RECTANGULAR HOLLOW LENGTHS		
40 x 20 x 2mm	7.6m	
50 x 25 x 2mm	7.6m	
50 x 25 x 2.5mm	7.6m	
50 x 25 x 3mm	7.6m	
50 x 30 x 2.5mm	7.6m	
50 x 30 x 3mm	7.6m	
60 x 40 x 2mm	7.6m	
60 x 40 x 2.5mm	7.6m	
60 x 40 x 3mm	7.6m	
60 x 40 x 4mm	7.6m	
60 x 40 x 5mm	7.6m	
80 x 40 x 3mm	7.6m	
80 x 40 x 4mm	7.6m	
80 x 40 x 5mm	7.6m	
80 x 50 x 5mm	7.6m	
100 x 50 x 3mm	7.6m	
100 x 50 x 4mm	7.6m	
100 x 50 x 5mm	7.6m	
100 x 50 x 6mm	7.6m	
120 x 60 x 3mm	7.6m	
120 x 60 x 3.5mm	7.6m	12m
120 x 60 x 5mm	7.6m	
120 x 60 x 6mm		12m
120 x 80 x 5mm	7.5m	
120 x 80 x 6mm	7.6m	12m
120 x 80 x 8mm	10m	12m
150 x 100 x 5mm	7.6m	12m
150 x 100 x 6mm	7.5m	
150 x 100 x 8mm	7.6m	12m
150 x 100 x 10mm	10m	12m
160 x 80 x 5mm	7.6m	12m
160 x 80 x 6mm		12m
160 x 80 x 8mm		12m

Contact our sales team today

Tel.: +353-56-7725050

Fax: +353-56-7725055

E-mail: salesds@steel.ie

www.steel.ie

Galvanised Tube

RECTANGULAR HOLLOW LENGTHS		
160 x 80 x 10mm		12m
200 x 100 x 5mm	7.5m	12m
200 x 100 x 6mm	7.6m	12m
200 x 100 x 8mm	7.6m	12m
200 x 100 x 10mm		12m
200 x 150 x 6mm		12m
200 x 150 x 8mm		12m
250 x 100 x 5mm		12m
250 x 100 x 6mm		12m
250 x 100 x 8mm		12m
250 x 100 x 10mm		12m
250 x 150 x 6mm		12m
250 x 150 x 8mm		12m
250 x 150 x 10mm		12m
300 x 200 x 10mm		12m
400 x 200 x 10mm		12m

Standard Grade is **S235JR**. Some sizes are also available in **Cold Formed S355 J2H**.

For more information please call a member of our sales team on 056 - 7725050

PRIME GALV TUBE		
21.3 x 2.65mm		6m
26.9 x 2.65mm		6m
33.7 x 2.65mm		
33.7 x 3.25mm		6m
42.4 x 2.65mm		6m
42.4 x 3.25mm		6m
48.3 x 2.5mm (Cubicle)		6m
48.3 x 3.25mm	5m	6m
60.3 x 3.65mm		6m
76.1 x 3.65mm	5m	6m
88.9 x 4.05mm	5m	6m
114.3 x 4.5mm		6m



Circular Hollow Section

CIRCULAR HOLLOW STOCK LENGTHS				
21.3 x 2.5mm			7.6m	
26.9 x 2.5mm			7.6m	
33.7 x 2mm			7.6m	
33.7 x 2.5mm			7.6m	
33.7 x 3mm			7.6m	
33.7 x 5mm			7.5m	
42.4 x 2mm			7.5m	
42.4 x 2.5mm			7.6m	
42.4 x 3mm			7.6m	
42.4 x 4mm			7.6m	
48.3 x 2.5mm			7.6m	
48.3 x 3mm			7.6m	
48.3 x 4mm			7.6m	
48.3 x 5mm			7.5m	
60.3 x 3mm			7.6m	
60.3 x 4mm			7.6m	
60.3 x 5mm			7.6m	
76.1 x 3mm			7.6m	
76.1 x 4mm			7.6m	
76.1 x 5mm			7.6m	
88.9 x 3mm	6.1m			
88.9 x 3.5mm			7.6m	
88.9 x 4mm			7.6m	
88.9 x 5mm			7.5m	
88.9 x 6mm				12m
101.6 x 3mm			7.6m	
101.6 x 3.5mm			7.6m	
101.6 x 5mm			7.6m	
114.3 x 3mm			7.5m	
114.3 x 3.5mm		6.6m	7.5m	
114.3 x 5mm			7.6m	12m
114.3 x 6mm			7.6m	12m
127 x 3mm			7.5m	
139.7 x 3mm			7.5m	
139.7 x 5mm		7.6m	10m	12m
139.7 x 6mm			7.6m	12m
139.7 x 8mm			7.6m	12m
139.7 x 10mm		7.6m	10m	12m
168.3 x 3.7mm	6.1m		7.6m	
168.3 x 5mm			7.6m	12m
168.3 x 6mm			7.6m	12m
168.3 x 8mm				12m
168.3 x 10mm				12m
193.7 x 5mm				12m

Square & Rounds

CIRCULAR HOLLOW STOCK LENGTHS				
193.7 x 6mm				12m
193.7 x 8mm				12m
193.7 x 10mm				12m
219 x 5mm				12m
219.1 x 6mm				12m
219.1 x 8mm				12m
219.1 x 10mm				12m
244.5 x 8mm				12m
244.5 x 10mm			10m	12.2m

Standard Grade is **S235JR**. Some sizes are also available in **Cold Formed S355J2H**. Please check availability with our sales team on 056 - 7725050



MILD STEEL SQUARE LENGTHS	
10 mm	6.1m
12 mm	6.1m
16 mm	6.1m
20 mm	6.1m
25 mm	6.1m
30 mm	6.1m
40 mm	6.1m
50 mm	6.1m

Standard Grade is **S275JR**
Some Sizes are also available in **S355J2**

MILD STEEL ROUND	
6 mm	6.1m
8 mm	6.1m
10 mm	6.1m
12 mm	6.1m
16 mm	6.1m
20 mm	6.1m
25 mm	6.1m
32 mm	6.1m
40 mm	6.1m
50 mm	6.1m

Standard Grade is **S275JR**

Chequer Plate

MILD STEEL CHEQUER PLATES
2000 x 1000 x 3mm
2000 x 1000 x 4.5mm
2500 x 1250 x 3mm
2500 x 1250 x 4.5mm
2500 x 1250 x 6mm
2500 x 1250 x 8mm
2500 x 1250 x 10mm
2500 x 1250 x 12.5mm
3000 x 1500 x 3mm
3000 x 1500 x 4.5mm
3000 x 1500 x 6mm
3000 x 1500 x 8mm
3000 x 1500 x 10mm
3000 x 1500 x 12.5mm

Available in Grades **S235JR** and **S275JR**. Contact our sales team for more information

ALUMINIUM CHEQUER PLATES
2500 x 1250 x 2mm
2500 x 1250 x 3mm
2500 x 1250 x 4.5mm
3000 x 1500 x 3mm
3000 x 1500 x 4.5mm



Plate

MILD STEEL PLATE	
2500 x 1250 x 1.6mm	3000 x 1500 x 2mm
2500 x 1250 x 2mm	3000 x 1500 x 2.5mm
2500 x 1250 x 2.5mm	3000 x 1500 x 3mm
2500 x 1250 x 3mm	3000 x 1500 x 4mm
2500 x 1250 x 4mm	3000 x 1500 x 5mm
2500 x 1250 x 5mm	3000 x 1500 x 6mm
2500 x 1250 x 6mm	3000 x 1500 x 8mm
2500 x 1250 x 8mm	3000 x 1500 x 10mm
2500 x 1250 x 10mm	3000 x 1500 x 12mm
2500 x 1250 x 12mm	3000 x 1500 x 15mm
2500 x 1250 x 15mm	3000 x 1500 x 20mm
2500 x 1250 x 20mm	3000 x 1500 x 25mm
2500 x 1250 x 25mm	3000 x 1500 x 30mm
2500 x 1250 x 30mm	3000 x 1500 x 40mm
2500 x 1250 x 40mm	3000 x 1500 x 50mm
2500 x 1250 x 50mm	3660 x 1830 x 5mm
4000 x 2000 x 15mm	4000 x 2000 x 20mm

Available in Grades **DD11**, **S235JR**, **S275JR**, **S355J2+N**, and **S355JR**. Please check with our sales office on 056 7725050 for more information



COLD ROLLED PLATE
2500 x 1250 x 0.8mm
2500 x 1250 x 1mm
2500 x 1250 x 1.2mm

Contact our sales team today

Tel.: +353-56-7725050

Fax: +353-56-7725055

E-mail: salesds@steel.ie

www.steel.ie

Mesh & Rebar

WELD MESH

25 x 25 x 3 mm (1" x 10G)	1830 x 915
25 x 25 x 3 mm (1" x 10G)	2500 x 1250
50 x 50 x 3 mm (2" x 10G)	1830 x 915
50 x 50 x 3 mm (2" x 10G)	2500 x 1250
50 x 50 x 4 mm (2" x 8G)	2500 x 1250
75 x 75 x 4 mm (3" x 8G)	2500 x 1250

GALVANISED WELD MESH

25 x 25 x 2.5 mm (1" x 12G)	2500 x 1250
25 x 25 x 3 mm (1" x 10G)	2500 x 1250
50 x 50 x 3 mm (2" x 10G)	2500 x 1250
50 x 50 x 4 mm (2" x 8G)	2500 x 1250
75 x 75 x 4 mm (3" x 8G)	2500 x 1250

REINFORCING MESH

A142 (6mm)	4800 x 2400 mm
A252 (8mm)	4800 x 2400 mm
A393 (10mm)	4800 x 2400 mm



HIGH YIELD RE-BAR

10 mm	6m	12m
12 mm	6m	12m
16 mm	6m	12m
20 mm	6m	12m
25 mm	6m	12m
32 mm		12m

Flow Forge

SELF COLOUR FLOW FORGE

41/100 25mm x 3mm
41/100 25mm x 5mm
41/100 25mm x 5 mm (Serrated)
41/100 30mm x 3mm
41/100 30mm x 5mm
41/100 30mm x 5mm (Serrated)
41/100 40mm x 5mm

GALVANISED FLOW FORGE

41/100 25mm x 3mm
41/100 25mm x 5mm
41/100 25mm x 5mm (Serrated)
41/100 30mm x 3mm
41/100 30mm x 5mm
41/100 30mm x 5mm (Serrated)
41/100 40mm x 3mm
41/100 40mm x 5mm

GALVANISED FLOW FORGE STAIR TREADS

900mm x 290mm

Contact our sales team today

Tel.: +353-56-7725050

Fax: +353-56-7725055

E-mail: salesds@steel.ie

www.steel.ie

Shotblasting and Priming



Shotblasting and Priming

Duggan Steel (Irl.) Ltd. provides a Shot Blasting and Priming service.

- Zinc Phosphate Primer
- Zinc rich Primer (Grant Accepted)



Do you have the most up to date information?

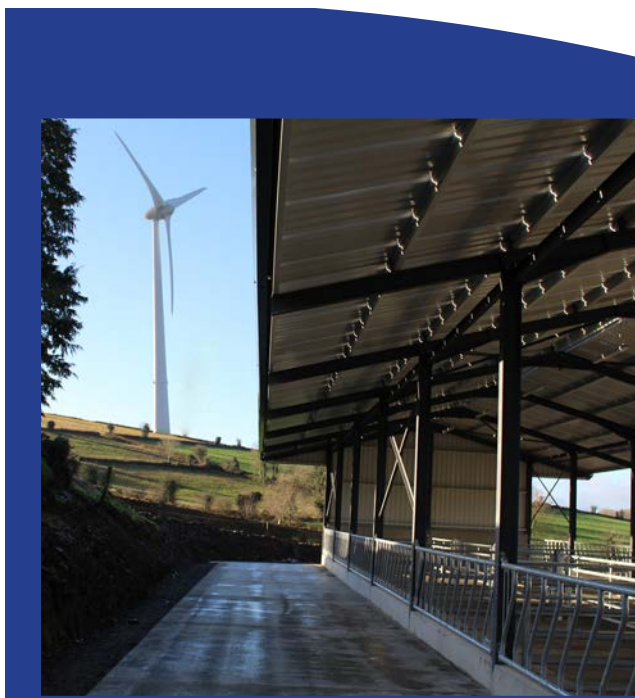
The information in this brochure is current at time of publication but subject to change due to product updates, technical advances and the passage of time. Our website provides the most comprehensive, authoritative and up to date source of information on all aspects of the business of the Duggan Steel Group. Check www.steel.ie regularly to ensure you are up to date.

Approximate Conversions

Metric	Imperial
3mm	1/8"
5mm	3/16"
6mm	1/4"
8mm	5/16"
10mm	3/8"
12mm	1/2"
16mm	5/8"
20mm	3/4"
25mm	1"
32mm	1 1/4"
40mm	1 1/2"
50mm	2"
65mm	2 1/2"
76mm	3"
102mm	4"
127mm	5"
152mm	6"
178mm	7"
203mm	8"
225mm	9"
254mm	10"
305mm	12"
356mm	14"
406mm	16"
457mm	18"
533mm	21"
610mm	24"

Metric	Imperial
4.1m	13'6"
5.0m	16'4"
6.1m	20'0"
7.6m	25'0"
10.0m	32'10"
11.0m	36'0"
12.2m	40'0"
14.0m	46'0"
15.3m	50'0"
18.0m	60'0"

Metric	Imperial
0.6mm	24g
0.8mm	22g
1.0mm	20g
1.2mm	18g
1.6mm	16g
2.0mm	14g
2.5mm	12g
3.0mm	10g



DUGGAN

DUGGAN PROFILES & STEEL SERVICE CENTRE Ltd.

**Quality
Products for
your Farm Buildings**

- Steel Sheeting
- AgriPurlin
- Roofing Accessories

DUGGAN STEEL GROUP

DUGGAN



DUGGAN STEEL (IRL) Ltd. STEEL STOCKHOLDERS

*Tullamaine, Callan Road
Kilkenny - Ireland
Tel.: +353-56-7725050
Fax: +353-56-7725055
E-mail: salesdp@steel.ie*

DUGGAN



DUGGAN PROFILES & STEEL SERVICE CENTRE Ltd.

*Dublin Road,
Kilkenny - Ireland
Tel.: +353-56-7722485
Fax: +353-56-7763411
E-mail: salesdp@steel.ie*

DUGGAN



DUGGAN STEEL (IRL) CORK DEPOT

*Parnell Street, Bandon
Co. Cork - Ireland
Tel.: +353-23-8841166
Fax: +353-23-8841326
E-mail: salescork@steel.ie*

DUGGAN



DUGGAN STEEL RETAIL STORES

*Tullamaine, Callan Road
Co. Kilkenny - Ireland
Tel.: (056)7706145
Fax: (056)7725073
E-mail: shop@steel.ie*



Scan with your smartphone to visit our website

*Dublin Road,
Kilkenny - Ireland
Tel.: +353-56-7722485
Fax: +353-56-7763411
E-mail: salesdp@steel.ie*

April 2023

© copyright Duggan Steel Group Ltd. 2023



Please Note: All reasonable care has been taken in the compilation of the information contained within this publication, but Duggan Steel Group Ltd. and its related companies do not accept responsibility for errors or for information which is found to be misleading. Suggestions for, or descriptions of the end use or application of products or methods of working are for information only and Duggan Steel Group Ltd. and its related companies accept no liability in respect thereof. It is the customer's responsibility to ensure that the product is fit for its intended purpose and that the actual conditions of use are suitable. It is also the customer's responsibility to ensure overall compliance with the current Health & Safety and Building Regulations. Dimensions are for illustration purposes only and subject to change. Duggan Steel Group pursues a policy of continuous product development and reserves the right to amend specifications without prior notice. Please refer to our website www.steel.ie for the most up to date information.