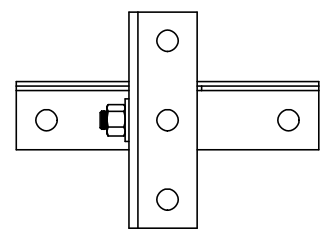
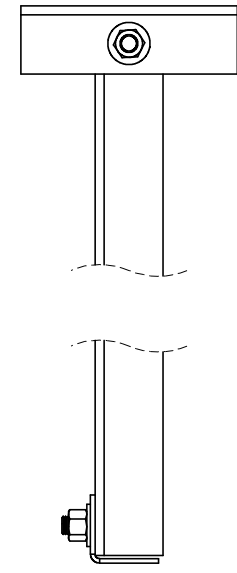
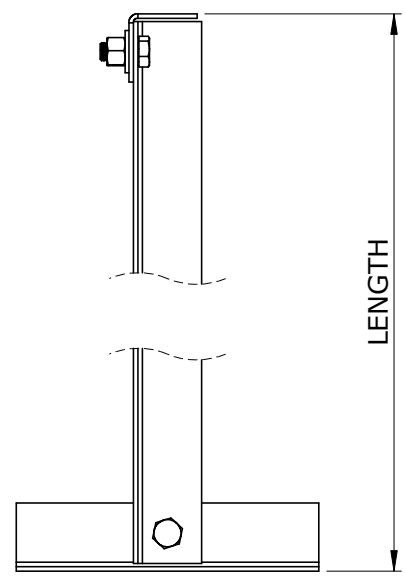
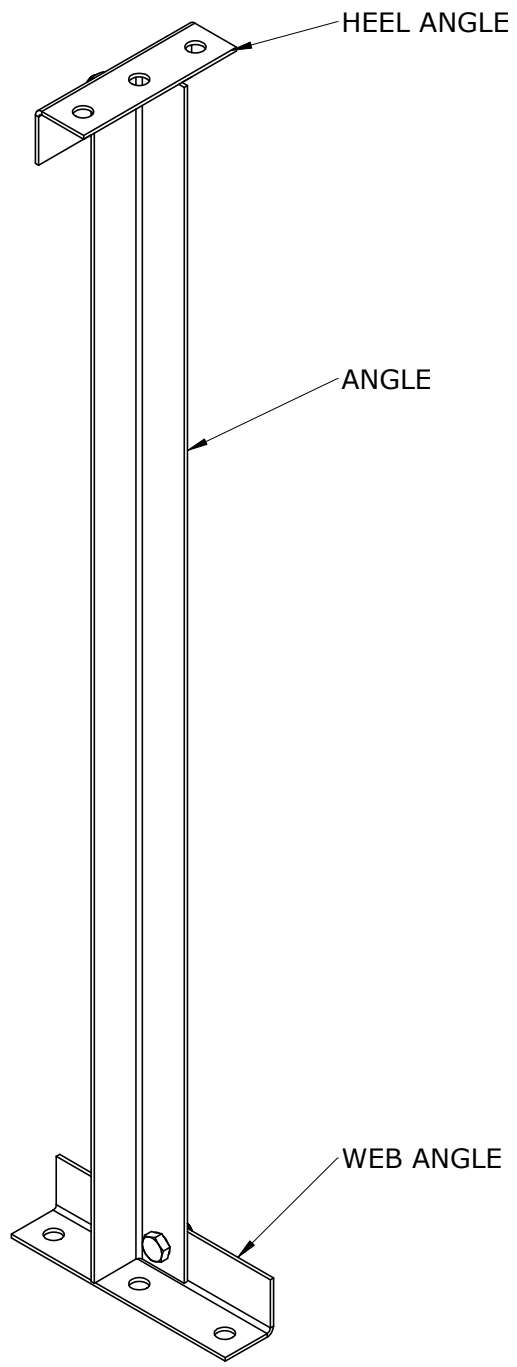


1 2 3 4 5 6

A  
B  
C  
D

A  
B  
C



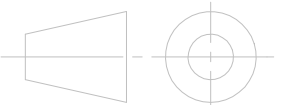
Angle Struts are specified with reference to the section depth they are to suit as indicated in the table underneath

Product Code	To suit Section Depth
DP-ANGLESTRUT145	145
DP-ANGLESTRUT175	175
DP-ANGLESTRUT205	205
DP-ANGLESTRUT235	235
DP-ANGLESTRUT265	265
DP-ANGLESTRUT300	300
DP-ANGLESTRUT325	325

TOLERANCES (UNO)			ALL DIMENSIONS IN MM	
DRAWN	SG	DATE	GRADE	MATERIAL:
APPV'D		30/06/2009	THICKNESS	
MFG			QUANTITY	

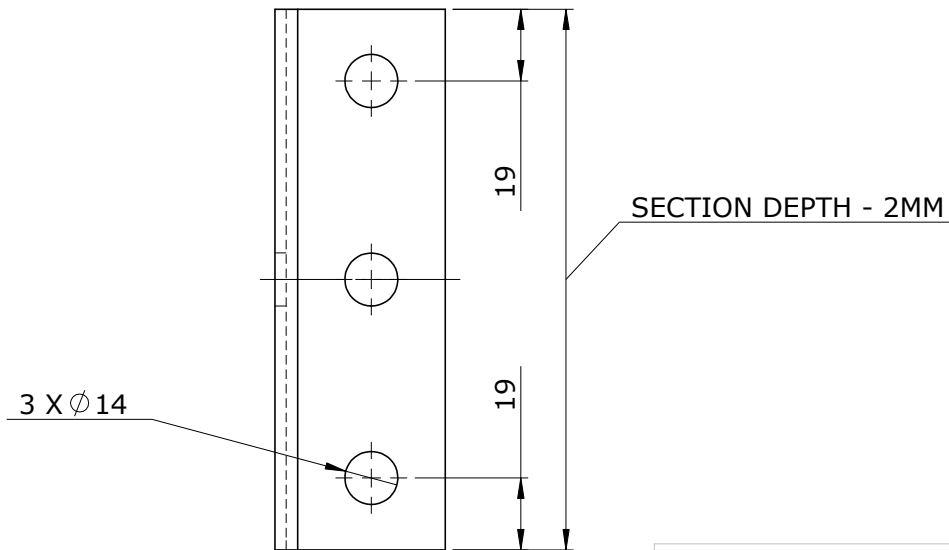
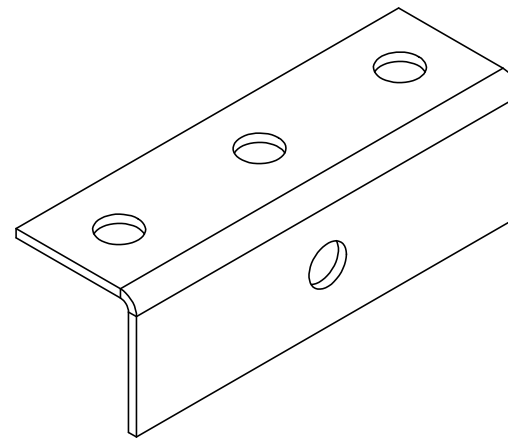
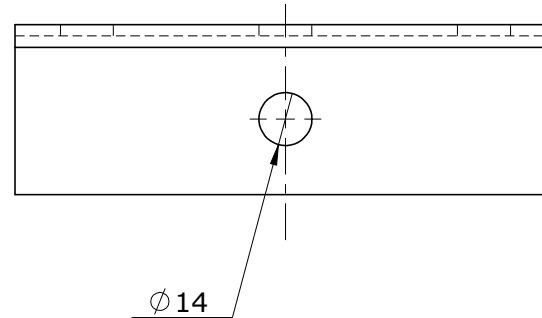
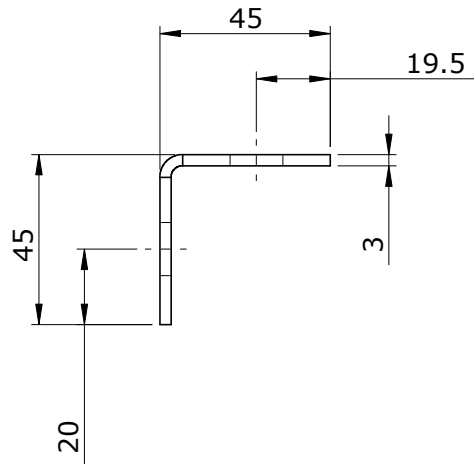
TITLE: TYPICAL ANGLE STRUT ASSEMBLY

CUSTOMER: DUGGAN PROFILES PART NO.:



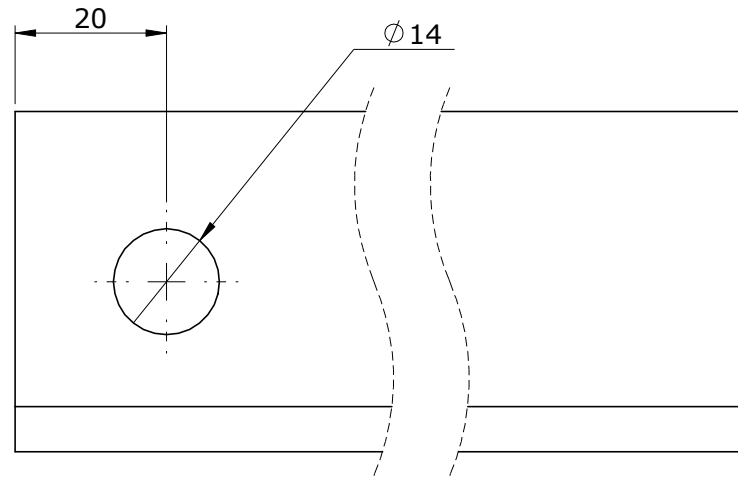
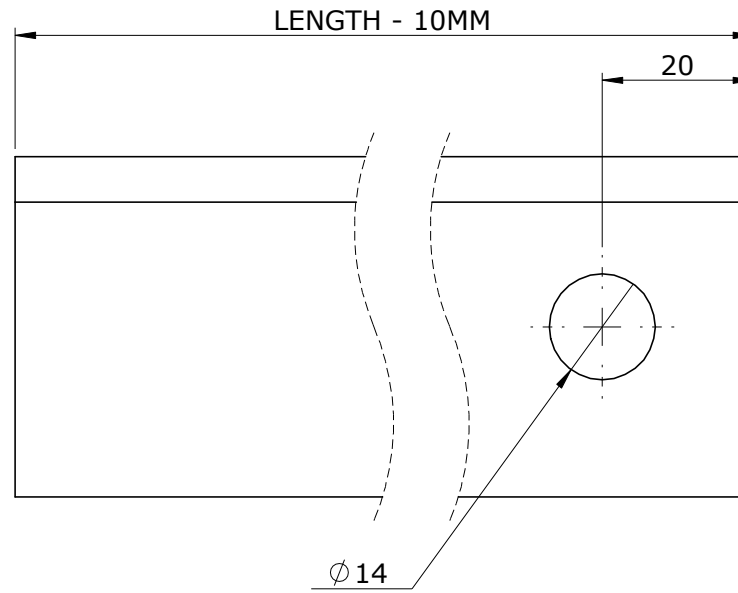
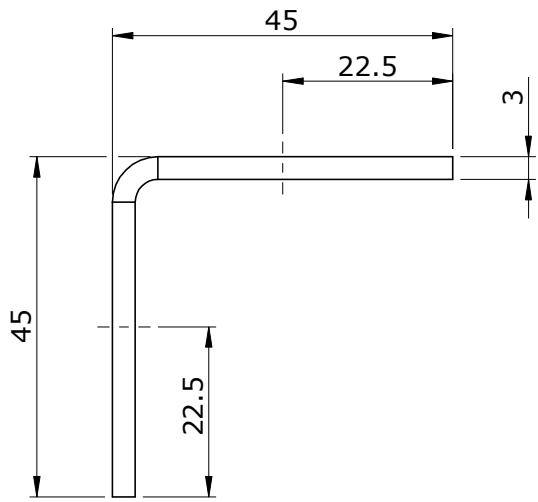
DWG NO. DP-ANGLESTRUT\_145-325 Rev

1 2 SCALE:1:5 SHEET 1 OF 4



**NOTE:** THE LENGTH OF THE HEEL ANGLE VARIES WITH SECTION DEPTH

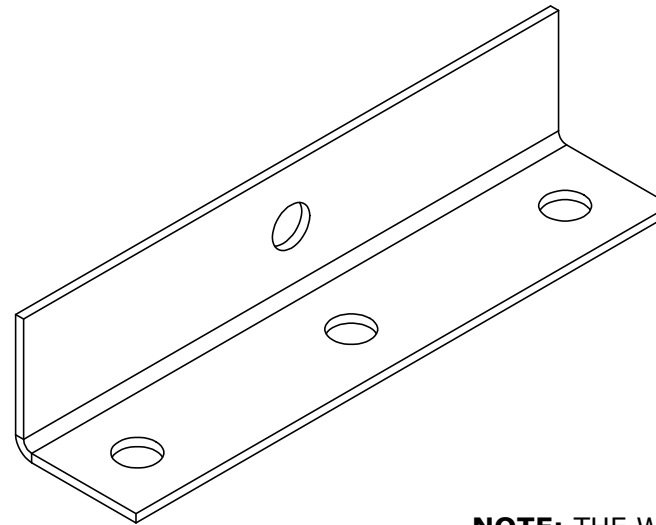
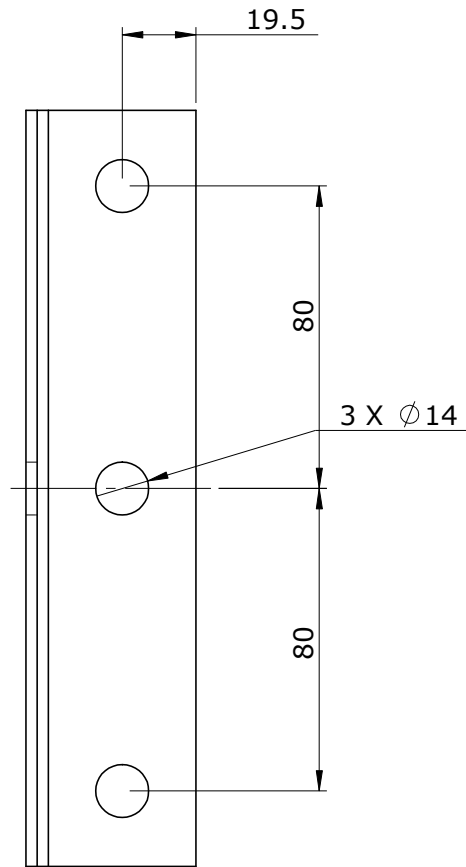
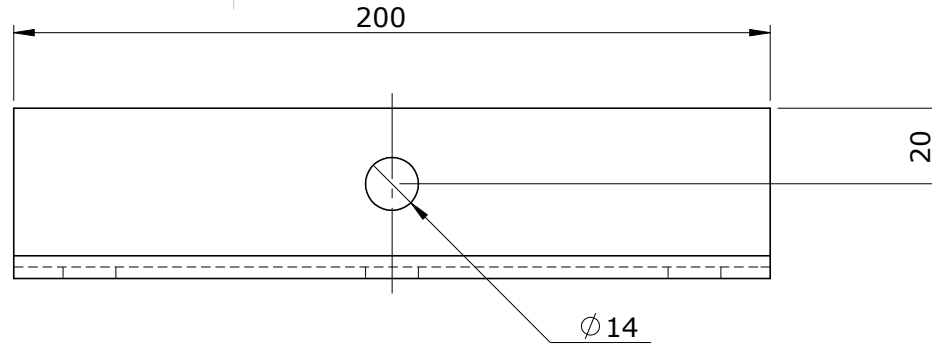
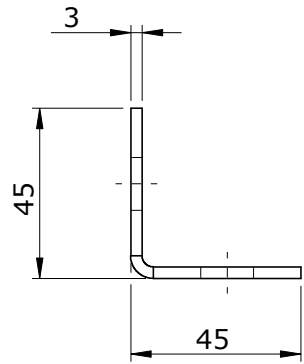
TOLERANCES (UNO)			ALL DIMENSIONS IN MM		TITLE: HEEL ANGLE FOR ANGLE STRUT	
DRAWN	SG	DATE 09/06/2009	MATERIAL:	GALVANISED MILD STEEL	CUSTOMER	PART NO.
APPV'D			GRADE	DX51D	DUGGAN PROFILES	
MFG			THICKNESS	3	DWG NO.	Rev
			QUANTITY		HEEL_ANGLE_6/07/2010/1	
						SCALE:1:2
DUGGAN PROFILES & STEEL SERVICE CENTRE Ltd.						SHEET 2 OF 4



**NOTE:** THE ANGLE HAS A COMMON CROSS SECTION IRRESPECTIVE OF SECTION DEPTH

TOLERANCES (UNO)			ALL DIMENSIONS IN MM		TITLE: ANGLE FOR ANGLE STRUT	
DRAWN	SG	DATE 09/06/2009	MATERIAL:	GALVANISED MILD STEEL	CUSTOMER	
APPV'D			GRADE	DX51D	DUGGAN PROFILES	
MFG			THICKNESS	3	PART NO.	
			QUANTITY		DWG NO.	
					ANGLE_17/06/2010/1	
					SCALE:1:20	Rev
					SHEET 3 OF 4	





**NOTE:** THE WEB ANGLE IS THE SAME REGARDLESS OF SECTION DEPTH

TOLERANCES (UNO)			ALL DIMENSIONS IN MM		TITLE: WEB ANGLE FOR ANGLE STRUT	
DRAWN	SG	DATE 09/06/2009	MATERIAL:	GALVANISED MILD STEEL	CUSTOMER	
APPV'D			GRADE	DX51D	DUGGAN PROFILES	
MFG			THICKNESS	3	PART NO.	
			QUANTITY		DWG NO.	
					WEB_ANGLE_17/06/2010/1	
					SCALE:1:5	Rev
					SHEET 4 OF 4	

