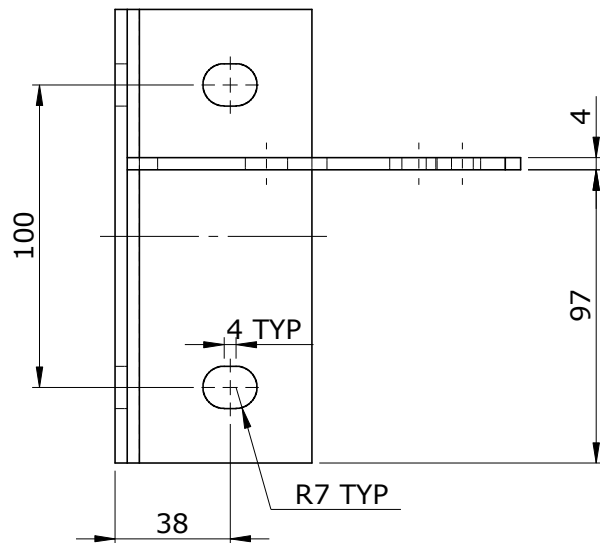


**NOTE:** PREPAINTED COMPONENTS REQUIRE POST MANUFACTURE SPRAYING/POWDER COATING



### Eaves Strut Cleat Options

Product Code	To suit Eaves Beam Depth	"HEIGHT"
DP-EBS-CLEAT180	180	128
DP-EBS-CLEAT210	210	158
DP-PEBS-CLEAT180	180	128
DP-PEBS-CLEAT210	210	158

TOLERANCES (UNO)

ALL DIMENSIONS IN MM

TITLE:

DRAWN SG DATE 28/05/2009  
 APPV'D  
 MFG

MATERIAL: GALVANISED MILD STEEL  
 GRADE: S275  
 THICKNESS: 4  
 QUANTITY

EAVES STRUT CLEAT OPTIONS

CUSTOMER PART NO.

DUGGAN PROFILES



DWG NO. EAVES\_STRUT\_CLEATS

Rev

SCALE:1:5